



## Teaching Character (5–11)

### Litterbugs

Peter Stanley-Ward | 2015 | UK | 15 mins | English

Litterbugs (2016) Treehouse Digital © All rights reserved

#### SYNOPSIS:

When local bullies turn their eye on Alice, a young inventor with lots of creative ideas, pocket-sized superhero Stanley steps in to avenge her. But when his imaginary superhero world is overpowered by the same bullies, it's Alice's clever gizmos that come to the rescue. Together, they become The Awesome Squad. A sweet tale of cleverness, strength and friendship joining forces in the fight against bullying.

#### SESSION AIMS:

- To be able to explain how characters feel and react to one another.
- To be able to create a filmed character study.

#### YOU WILL NEED

- **Teaching Character (5–11) British Council Shorts PowerPoint presentation**
- **Character sheet** (page 3)
- **Role on the Wall template** (page 4)
- **Character profile worksheet** (page 5)
- Cameras, tablets or stills cameras
- Marker pens

## Character

1. Discuss: What makes a good character? This question is also presented on **slide 2** of **Teaching Character (5-11): British Council**.
2. Watch the film clip titled 'Introduction' on **slide 3**.
3. Use the **Character sheet** (page 3) and discuss the questions in relation to the film extract you have just watched. The questions can also be found on **slide 4**.
4. Watch the film clip again on **slide 3**. Discuss: How is Alice feeling? How does the director show this?

CONTINUED >>

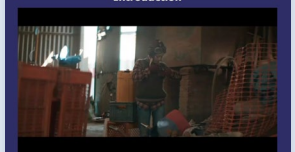


What makes a good character?

Teaching the 3Cs and 3Ss (5-11) British Council Shorts

Teaching Character

'Introduction'



TO PLAY THE CLIP CLICK ON THE IMAGE ABOVE

Teaching the 3Cs and 3Ss (5-11) British Council Shorts

5. Complete the **Role on the wall activity sheet** (page 4) using **slide 5**.
  - Add adjectives and phrases to explain how Alice is feeling on the inside of the outline.
  - Add adjectives and phrases to describe Stanley's opinion of Alice around the outside.
6. Once you have completed the Role on the Wall activity, explain your ideas to someone.

#### EXTENSION ACTIVITY

7. Complete the **Character profile worksheet** (page 5) for either Stanley or Alice using **slide 6** of the presentation.
8. Watch the entire film *Litterbugs* (14 mins 29 secs) by visiting: <https://vimeo.com/showcase/4816768/video/302463238> (PASSWORD: IFCuration1)

#### Character profile

1. On the **Character profile worksheet** annotate the pictures of Stanley and Alice with what you can tell about them from their appearance
2. Then complete the boxes at the end.

#### FILMMAKING ACTIVITY

1. Your task is to film a character study.
  - Show the viewer details about a character so that they can build a picture of who they might be
  - Try not to film their face or use their name.
2. Using tablets, video cameras or stills cameras, plan, practice and film your character study. It could be a character from *Litterbugs*, a character from another film you have watched, or a character you have read about.
3. Present your completed film to friends and family or to someone you are studying with.
4. For additional support on filmmaking: [www.intofilm.org/films/filmmaking](http://www.intofilm.org/films/filmmaking)

#### FURTHER VIEWING

Learn more about anti-bullying by watching and discussing films from this playlist: <http://bit.ly/2km7uPF>

## CHARACTER

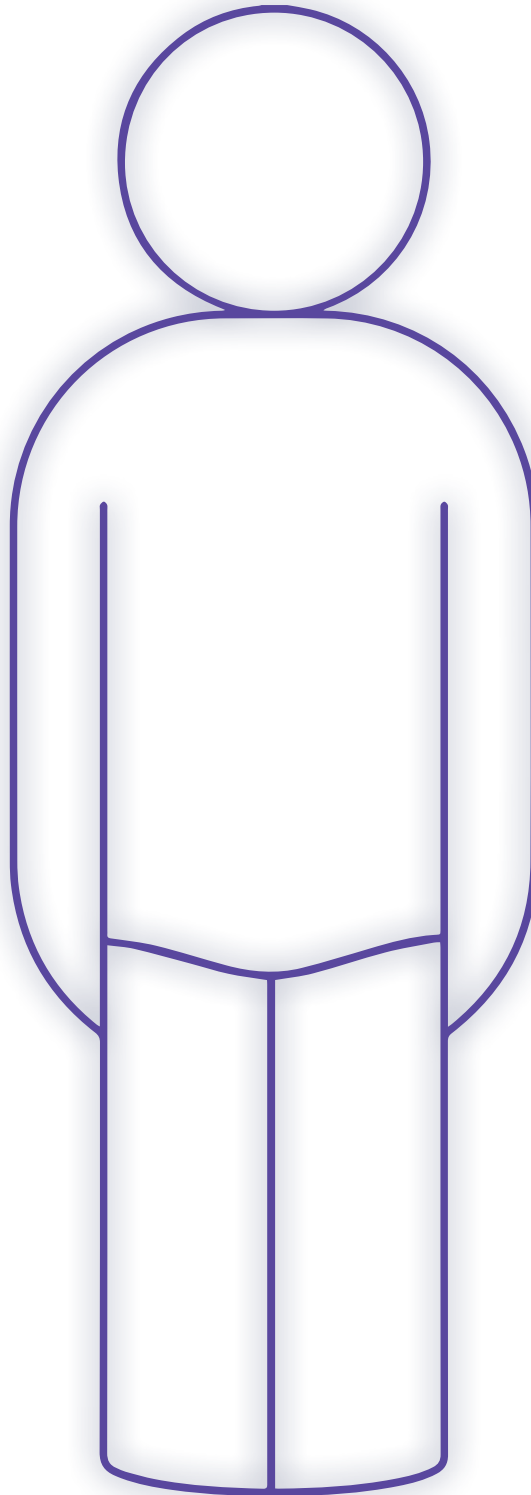


## CHARACTER

- Is there a main character?
- Is there more than one main character?
- Is the story really about this character or about someone else?
- Who is telling the story?
- What do the main characters look like?
- What might the way they look like tell us about them as a character?
- How do they speak and what do they say?
- How do they behave?
- How do they behave towards other characters?
- Do any of the characters have particular music or sounds?
- Which character interests you the most?
- Is there anyone else you would like to see in the story?
- How would the story be different with another character added or taken away?

**ROLE ON THE WALL**

Annotate with what the character is thinking in the head, how he/she feels in the body and what others think around the outside.



**CHARACTER PROFILE**

Filmmakers often give clues about characters in their appearance, clothing, body language and speech. Annotate the pictures of Alice and Stanley with the clues that you can see before filling in the boxes at the end.



Personality type

Personality type

Typical actions/gestures

Typical actions/gestures

Emotional state

Emotional state

Voice

Voice